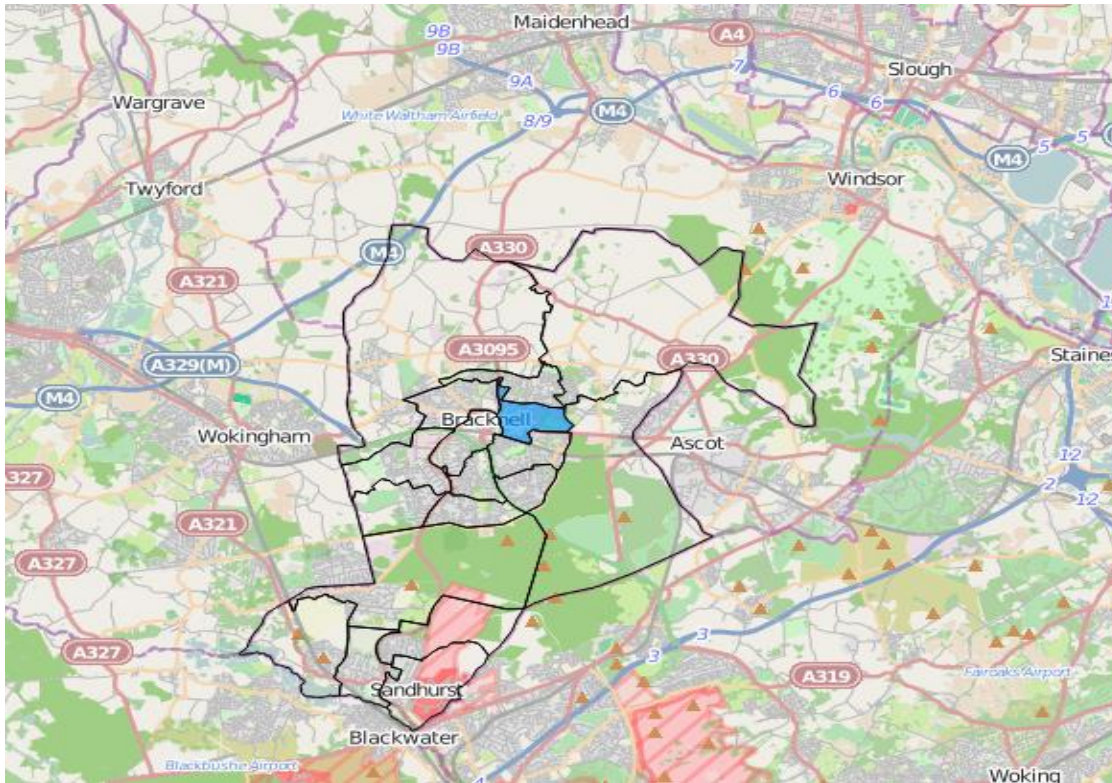


Bracknell Forest

Bullbrook



INTRODUCTION

CONTENTS

1. SUMMARY.....	2 to 3
2. DEMOGRAPHICS.....	4 to 6
3. DEPRIVATION, POVERTY AND ACCESS TO SERVICES.....	7
4. ECONOMY AND ENTERPRISE.....	8
5. EDUCATION.....	9
6. HEALTH.....	10 to 11
7. HOUSING.....	12
8. COMMUNITY SAFETY.....	13
9. ENVIRONMENT.....	14
10. SOURCES OF DATA.....	15

This is a profile of Bullbrook Ward. It is intended to accompany the wider Joint Strategic Needs Assessment of Bracknell Forest. The profiles have been created for each of the Electoral Wards within Bracknell Forest.

The profiles are split into nine topics with these being accompanied by a summary of key findings and supported by metadata (information about the data used within the profiles).

The profiles are a tool which will be regularly developed with both improved functionality and also new and refreshed indicator data. We welcome your comments and suggestions so that we can ensure future developments are relevant and useful to you.

The profiles are in the main, based only on data that are collected nationally with a high degree of completeness. This has been supplemented with local data where this has been considered appropriate.

Some indicators may give small numbers at Ward level. This should be taken into consideration when interpreting the data. Small changes in counts can lead to wide variance in the rate, and counts can vary significantly from year to year.

Any provisional conclusions drawn from the profiles should be compared with other sources of information, both quantitative and qualitative.

1. SUMMARY

- There are 6,323 people living in Bullbrook, 20.6% of these are children aged 0 to 15 and 15.1% are older people aged 65 and over. The non-white British population accounts for 17.8% of the total population. 83% of the Bullbrook population were born in the UK. This is fewer than the average of Bracknell Forest.
- Out of the 18 wards in Bracknell Forest, Bullbrook is the seventh most deprived ward. 14.8% of children in Bullbrook are at risk of living in poverty, compared with 11% across Bracknell Forest.
- In Bullbrook 9% of the working age population claim benefits compared with 6.2% in Bracknell Forest. 70.13% of the population of Bullbrook who are aged 16 to 74 years are in employment. This is lower than the average in Bracknell Forest. In Bullbrook, the majority of people in employment (41% of workers) were employed in managerial/professional/technical occupations, with 18% of workers employed in professional occupations. 19.6% of working age people in Bullbrook have no formal qualifications.
- 57.5% of children living in Bracknell Forest achieved 5 GCSEs at grade A* to C. 53.3% of children living in Bullbrook achieved 5 GCSEs at grade A* to C. 65.4% of children living in Bracknell Forest achieved the expected level of attainment at Key Stage 2. 73.3% of children living in Bullbrook achieved the expected level of attainment at Key Stage 2.
- The average life expectancy at birth for males living in Bullbrook is 80.2 years. The average life expectancy at birth for females in Bullbrook is 83.6 years. Death rates from all causes in people aged less than 75 are as expected. Emergency hospital admissions for all causes are lower than expected*.
- An estimated 23.3% of adults in Bullbrook are obese. An estimated 18.6% of adults in Bullbrook binge drink. An estimated 27% of adults in Bullbrook eat healthily.
- There are a total of 2573 dwellings in Bullbrook. The most common housing type in Bullbrook is terraced. This accounts for 34.4% of all housing. The average household size in Bullbrook is 2.3 people and 4.4% of housing in Bullbrook is classified as needing one or more bedrooms more than it has in order to be adequately sized for the number of people living there.
- There were 218 crimes recorded in Bullbrook during 2013/14. This equates to 35.5 crimes per 1,000 people living in Bullbrook - a rate that is higher than the average across Bracknell Forest.
- In Bullbrook, according to the Urban/rural classification from ONS in 2012, 100% of the population live in areas classified as urban city and town.

* Given the age and gender structure of the population and national death/admission rates

1. SUMMARY

Category	Indicator	Bullbrook	Bracknell Forest Average	Ward Range Worst	Local Authority Average Worst ← --- Best →	Ward Range Best
Deprivation & access	Indices of Multiple Deprivation Score - IMD (2015)	14.3	10.7	19.4		3.9
	% children in Poverty (2015)	14.8	11.0	20.0		3.5
	Barriers to Housing and Services Score - IMD domain (2015)	22.1	24.4	38.5		16.0
Economy & Enterprise	% Job Seekers Allowance Claimants (September 2017)	0.5	0.5	1.2		0.2
	Post-16 Qualifications - % Level 3 or higher (2011)	39.0	42.7	32.1		55.6
Education	% key Stage 2 Level 4+ (2012)	73.3	80.2	67.2		96.0
	% 5+ GCSEs A*-C (inc Maths and English) (2013/14)	53.3	57.6	44.7		72.8
Health	All Cause Mortality Rate <75, DSR per 100,000 (2012-16)	896.9	842.1	1090.6		416.4
	Life Expectancy - males (2011-15)	80.2	81.2	77.6		83.5
	Life Expectancy - females (2011-15)	83.6	85.0	82.1		91.6
	Emergency hospital admissions for all causes (SAR) 2011-16	90.6	85.8	102.1		63.6
	% low Birthweights <2500g (2011-15)	1.9	2.0	4.1		1.1
Housing	% occupancy rating - bedrooms -1 or less (2011)	4.4	3.0	5.7		0.9
	% no Central Heating (2011)	1.0	1.2	2.2		0.3
	% socially Rented (2011)	28.6	16.2	34.0		3.3
Community Safety	Crime rate per 1,000 (2013/14)	35.5	37.1	153.7		11.5
	Anti-social Behaviour rate per 1,000 (2013/14)	13.5	10.3	29.9		2.3
	Theft and handling stolen goods rate per 1,000 (2013/14)	8.0	13.2	76.8		1.7
	Violence with/without injury rate per 1,000 (2013/14)	9.3	6.6	22.7		1.5

How to read the spine chart:

The shapes on the graph represent the value of the ward compared against the Local Authority average. If positioned to the right of the average line this suggests the ward is performing 'better' in a particular indicator, to the left suggests it is 'worse'. This does not necessarily mean higher or lower values, e.g. high GCSE attainment is 'better', whereas a high crime rate is 'worse'. The light grey rectangle represents the range between the 'best' and 'worst' wards in the local authority. The yellow circles represent values that are within the 75th and 25th percentile for that indicator, or where most values typically lie. The black triangles represent values that are better than the average, whilst the blue diamond shows values that are worse.

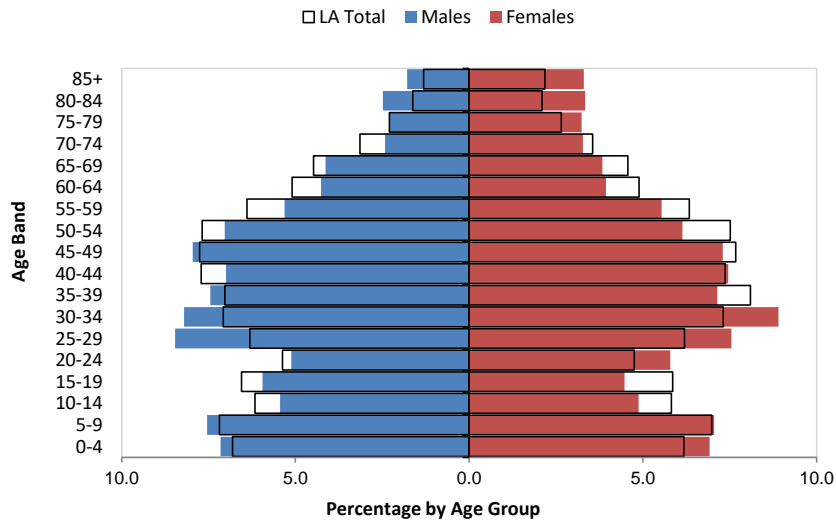
2. DEMOGRAPHICS

Population Summary 2016

- Bullbrook has a population of 6,323 people. This figure has increased at a greater rate than it has on average across Bracknell Forest since 2001.
- The working age population is relatively small in comparison to Bracknell Forest.
- Related to this, the ward has a proportionately smaller young population (21%) and a larger older population (15%).
- The 2011 Census indicates that 18% of Bullbrook are BME, which is higher than the Bracknell Forest average.
- The largest single BME population is the 'White: Other White' group. This group represents 30.8% of BME people and 5.9% of the total population of the ward.

	Bullbrook	Bracknell Forest
Total Population	6,323	-
Males	3,143	49.7%
Females	3,180	50.3%
Children (0-15)	1,303	20.6%
Working Age (16-64)	4,068	64.3%
Older People (65+)	952	15.1%
BME** population (2011 Census data)	1,127	17.8%
Population (2001)	5,061	-
Population Change (2001 to 2016)	1,262	24.9%
		8.9%

Population structure 2016



Source: ONS 2017

** Black and minority ethnic (used to collectively refer to non 'White: British' ethnicities)

Religion 2011

	Bullbrook	Bracknell Forest
Christian	3,503	59.1%
Buddhist	91	1.5%
Hindu	109	1.8%
Jewish	6	0.1%
Muslim	38	0.6%
Sikh	28	0.5%
Any other religion	26	0.4%
No Religion	1,785	30.1%
Religion not stated	343	5.8%
		6.6%

2. DEMOGRAPHICS

Ethnicity

	Bullbrook		Bracknell Forest		Bullbrook		Bracknell Forest	
Total BME (Non White British) Population	1,127	19%	15.1%					
White				Asian or Asian British				
British	4,802	75.9%	84.9%	Indian	117	1.9%	1.8%	
Irish	57	0.9%	0.9%	Pakistani	17	0.3%	0.5%	
Gypsy or Irish Traveller	2	0.0%	0.1%	Bangladeshi	2	0.0%	0.1%	
Other White (Including White European)	347	5.5%	4.7%	Chinese	45	0.7%	0.5%	
Mixed				Other Asian	219	3.5%	2.2%	
White and Black Caribbean	31	0.5%	0.6%	Black or Black British				
White and Black African	27	0.4%	0.3%	Black Caribbean	117	1.9%	1.4%	
White and Asian	36	0.6%	0.7%	Black African	13	0.2%	0.4%	
Other Mixed	34	0.5%	0.5%	Other Black	14	0.2%	0.2%	
Other Ethnic Group								
Other Ethnic Group	49	0.8%	0.4%					

Household Composition

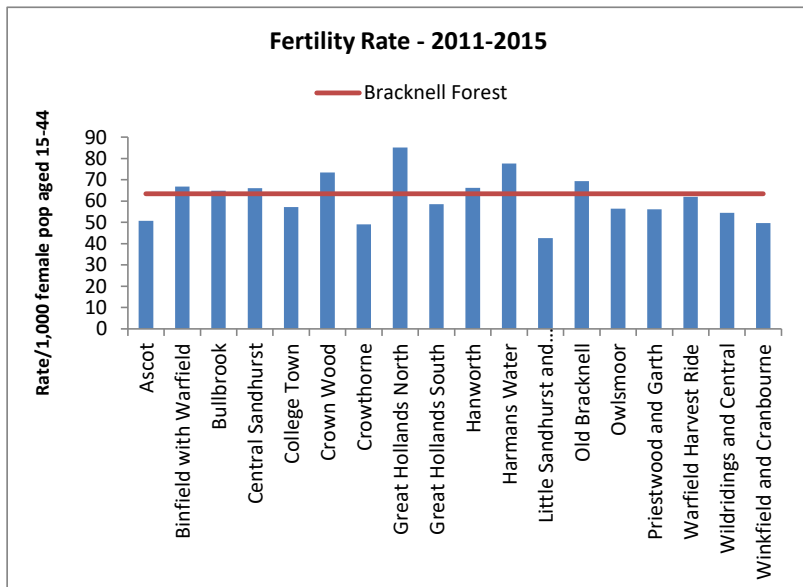
	Bullbrook		Bracknell Forest		Bullbrook		Bracknell Forest	
All Households:	2531		45,878					
One Person Household:	806	31.8%	27.7%	Lone Parent	263	10.4%	9.7%	
One Family Household:	1511	59.7%	65.9%	Dependent children	184	7.3%	6.6%	
All aged over 65	213	8.4%	6.5%	Non dependent children	79	3.1%	3.1%	
Married or same-sex civil partnership couple	775	30.6%	38.8%	Other household types	214	8.5%	6.4%	
No children	252	10.0%	13.5%	With dependent children	73	2.9%	2.3%	
Dependent children	386	15.3%	19.6%	All full-time students	1	0.0%	0.1%	
Non dependent children	137	5.4%	5.7%	All aged 65 and over	4	0.2%	0.2%	
Cohabiting couple	260	10.3%	10.9%	Other	136	30.6%	38.8%	
No children	144	5.7%	6.4%					
Dependent children	106	4.2%	4.0%					
Non dependent children	10	0.4%	0.4%					

2. DEMOGRAPHICS

Fertility Rate

Understanding the demography of an area will help with planning of appropriate services. The fertility rate is the ratio of live births in an area to the population of that area; expressed per 1000 population per year.

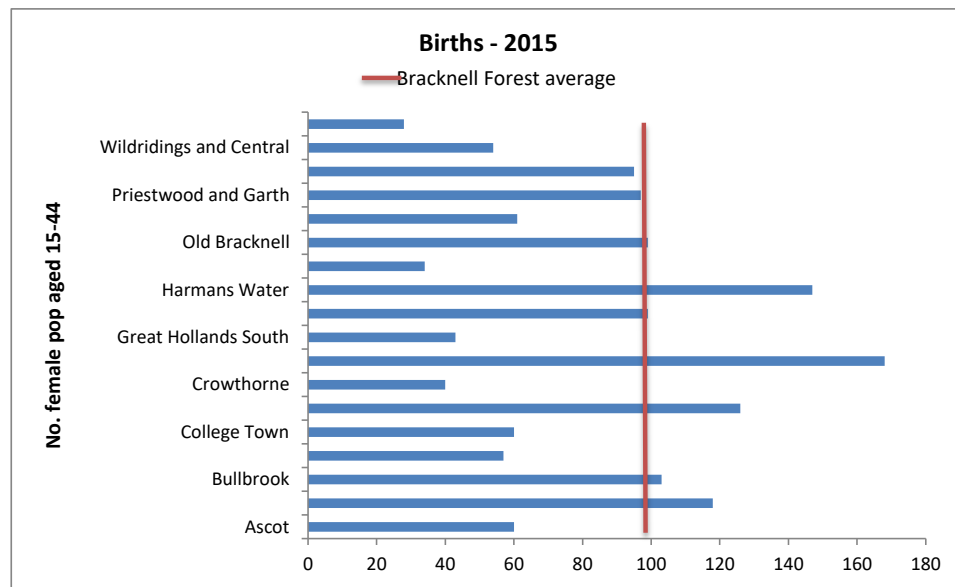
- The fertility rate, per 1,000 female population aged 15-44, in Bracknell Forest is 63.5, which is similar to the national rate of 63.2.
- The fertility rate in Bullbrook is 64.9 per 1,000 female population aged 15-44, this is more than the Bracknell Forest rate.



New Births

Local authorities are key users of birth statistics. Data are used, for example, to plan maternity services, inform policy decisions and monitor child mortality.

- There were 1,489 live births in Bracknell Forest in 2015.
- 103 of those were to mothers who reside in Bullbrook.
- 59% were boys and 41% were girls.
- 50% were born within a marriage/civil partnership and 50% were born outside a marriage/civil partnership.
- 99% were born in an NHS hospital.
- The average age of mother at birth of child was 29.
- 68% of births were to mothers born in the UK.



2. DEMOGRAPHICS

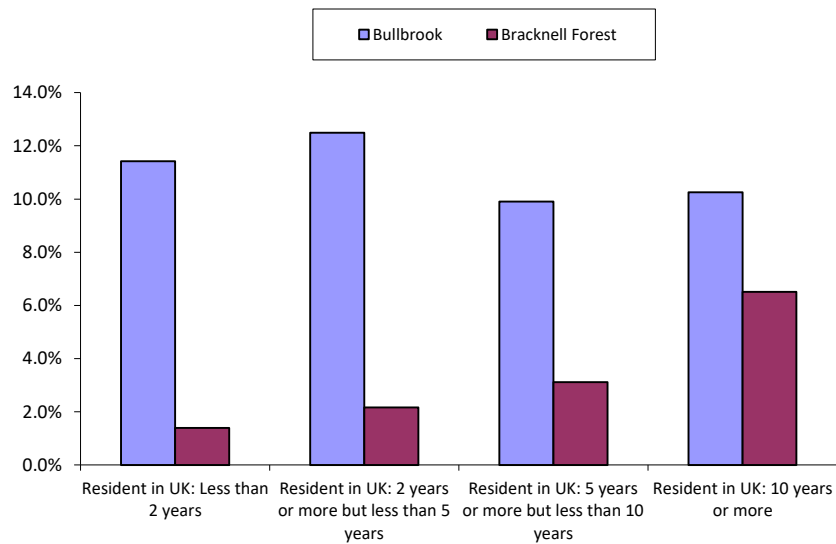
Migration

- 83% of the Bullbrook population were born in the UK. This is fewer than the average of Bracknell Forest.
- The majority of people living in Bullbrook who were not born in the UK have been resident in the UK for 10 years or more.
- The majority of people living in Bullbrook who were not born in the UK moved to the UK when they were aged between 30 to 44.

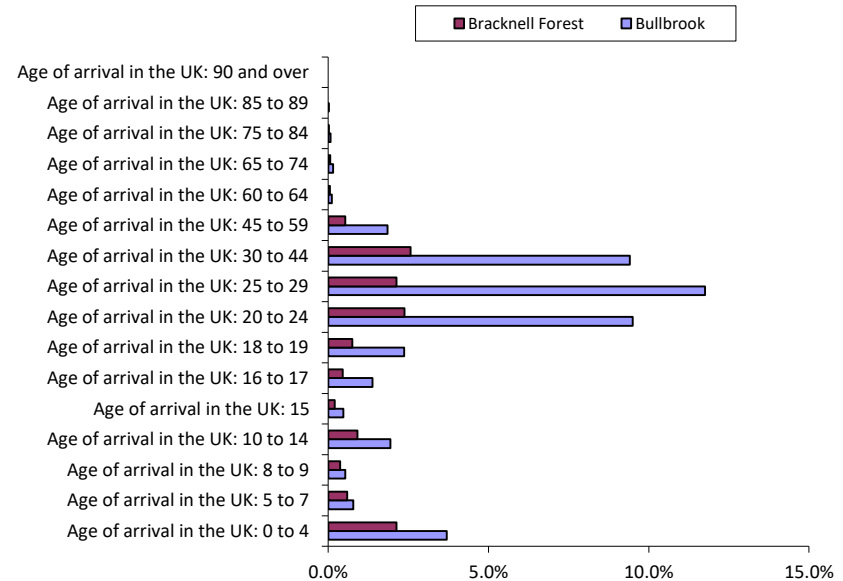
Country of birth 2011

	Bullbrook	Bracknell Forest
United Kingdom	4,940 83.3%	86.8%
Ireland	52 0.9%	0.7%
Other EU	316 5.3%	3.7%
Other Countries	621 10.5%	8.8%

Length of time in UK (non-UK born residents)



Age of arrival in UK (non-UK born residents)



3. DEPRIVATION, POVERTY AND ACCESS TO SERVICES

Indices of Multiple Deprivation (IMD)

- Out of the 18 wards in Bracknell Forest, Bullbrook is the seventh most deprived ward.
- 1611 people in the ward are living in an area classed amongst the 10% most deprived in Bracknell Forest, according to the latest Indices of Deprivation.
- Nationally, there aren't any people in any of the wards of Bracknell Forest that are in the 10% most deprived areas when comparing them at an England level.

Child Poverty

- 14.8% of children in Bullbrook are at risk of living in poverty, compared with 11% across Bracknell Forest.
- This figure has risen by 0.1% since 2006, and Bracknell Forest has increased by 0.6% since 2006.

Free school meals

- 7.9% of children living in Bracknell Forest and attending schools in Bracknell Forest are eligible for and receiving free school meals. 11.9% of children living in Bullbrook are eligible for and receiving free school meals.

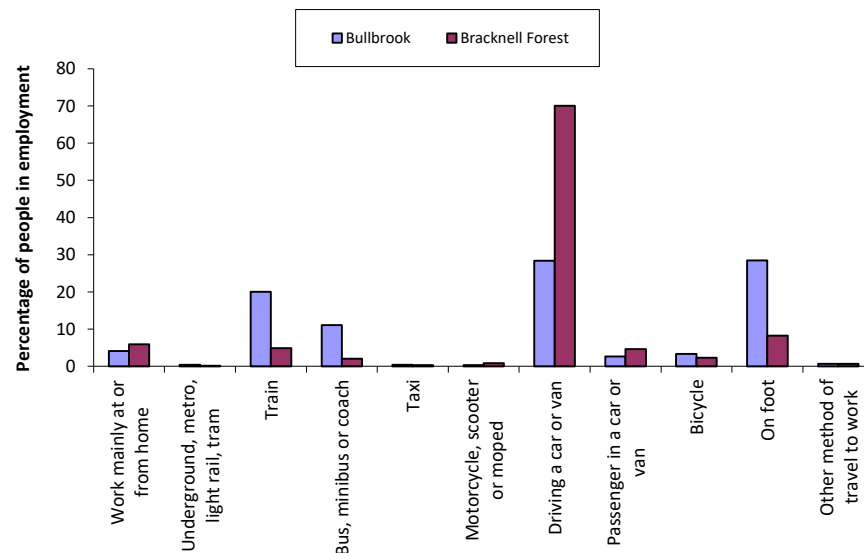
Accessibility

- Local bus services are provided by First in Berkshire & The Thames Valley, Courtney Buses and Thames Travel.
- Bracknell has two main railway stations, Bracknell and Martins Heron, both of which are on the Waterloo to Reading Line operated by South West Trains. As a consequence of the frequent service on this line, Bracknell is now a major commuter centre with its residents travelling in both directions (westwards to Reading and eastwards to London Waterloo).

Access to Services

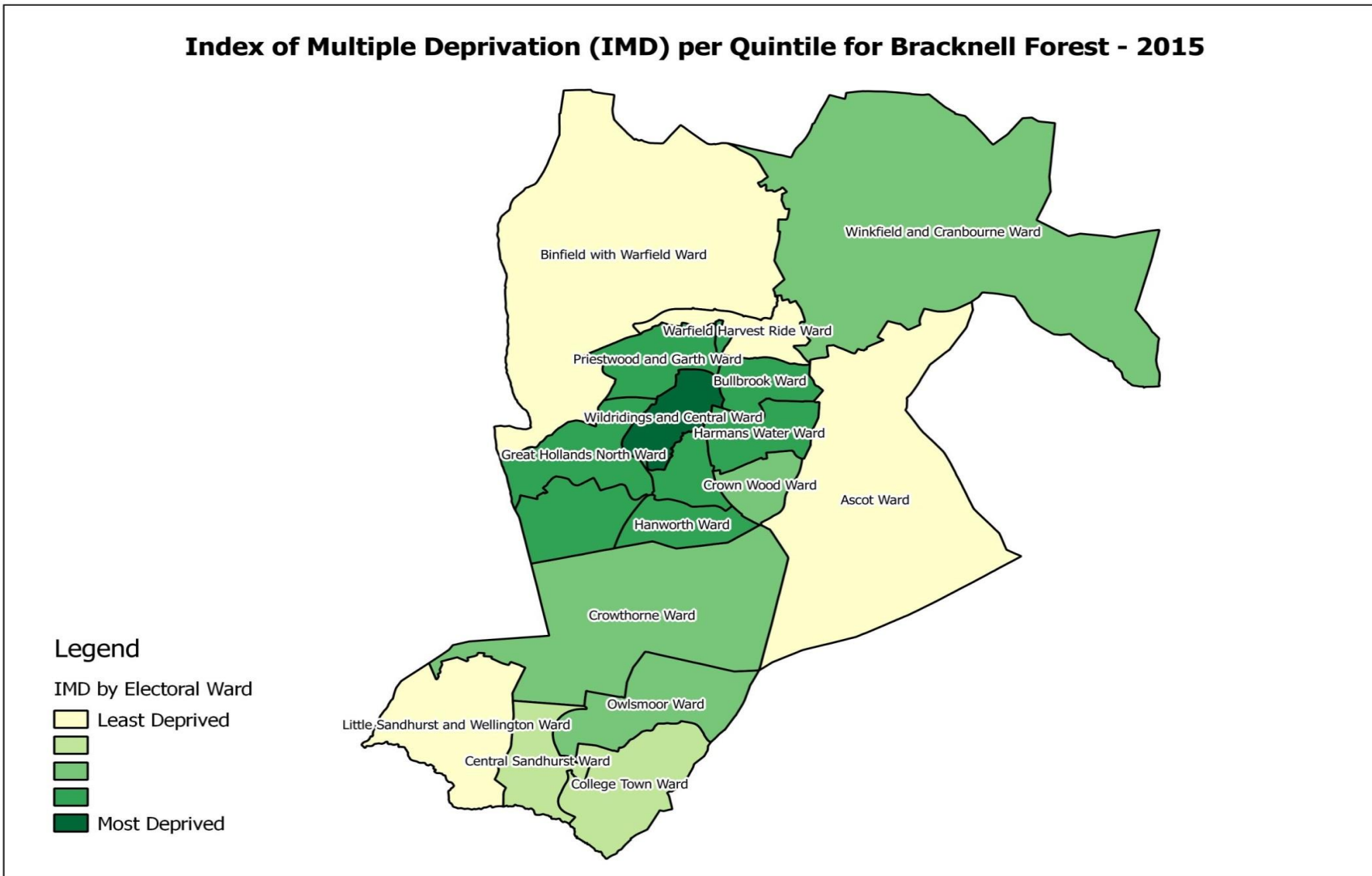
- There are 593 households in Bullbrook who do not own a car or van. This is 23.4% of all households in the Ward, which is more than the Bracknell Forest average.
- The indices of multiple deprivation includes a measure of barriers to housing and services. On this measure Bullbrook is the seventh least deprived ward in Bracknell Forest (out of the 18 wards in the borough).
- There aren't any people in the ward who are living in an area classed amongst the 10% most deprived in Bracknell Forest, against the barriers to housing and services measure.
- Nationally, there aren't any people in the ward who live in an area classed amongst the 10% most deprived for barriers to housing and services, according to the latest Indices of Deprivation.

Method of travel to work



IMD 2015: Bracknell Forest

Index of Multiple Deprivation (IMD) per Quintile for Bracknell Forest - 2015



4. ECONOMY AND ENTERPRISE

Benefit Claimants (November 2016-2017)

In Bullbrook 9% of the working age population claim benefits compared with 6.2% in Bracknell Forest. Broken down:

Statistical Group	Bullbrook		Bracknell Forest	
	Number	% of Ward Population	Number	% of Ward Population
Job Seekers	30	0.7%	380	0.5%
ESA and Incapacity Benefits	170	4.2%	2,510	3.2%
Lone parents	55	1.4%	2,510	0.7%
Carers	50	1.2%	545	0.9%
Others on income benefits	5	0.1%	700	0.1%
Disabled	45	1.1%	515	0.7%
Bereaved	10	0.2%	130	0.2%
Total Claimants	365	9.0%	4,840	6.2%

Qualifications

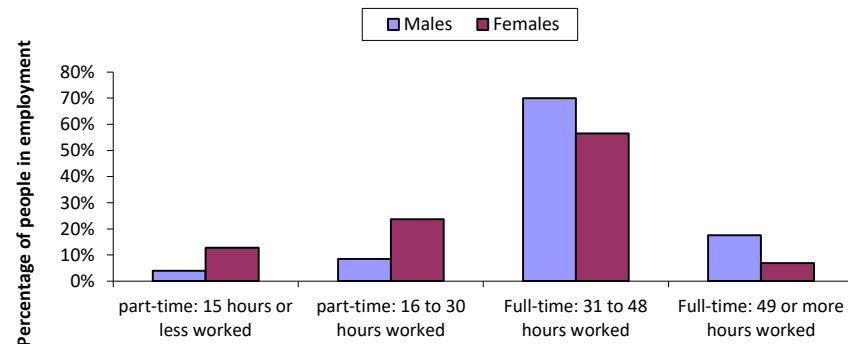
Recent statistics on qualifications are available at ward level using data collected as part of the 2011 Census. This showed that:

- 19.6% of working age people in Bullbrook have no formal qualifications.
- 39% were qualified to NVQ Level 3 or higher compared with 43% in Bracknell Forest as a whole.
- Please see the 'Education' section of these Ward Profiles for information on school attainment.

Employment

- In Bullbrook, the majority of people in employment (41% of workers) were employed in managerial/professional/technical occupations, with 18% of workers employed in professional occupations.
- In Bracknell Forest the majority of people in employment (47% of workers) were employed in managerial/professional/technical occupations. 19% of workers were employed in professional occupations.
- 70.13% of the population of Bullbrook who are aged 16 to 74 years are in employment. This is lower than the average in Bracknell Forest.
- 4.7% of the population of Bullbrook who are aged 16 to 74 years are unemployed. This is higher than the average in Bracknell Forest.

Hours worked



5. EDUCATION

We have to treat the following data with some caution due to the small numbers that are involved in the calculations. It is likely that differences between areas will be largely due to random effects occurring within the data. Data is only available at a Ward level for children who both live in, and attend school within, the local authority.

Pupil characteristics

- 16.2% of children living in Bracknell Forest come from non-White British backgrounds. 22.7% of children living in Bullbrook come from non-White British backgrounds.
- 8.7% of children living in Bracknell Forest have English as a second language. 13% of children living in Bullbrook have English as a second language.

Unauthorised absences

- 0.8% of school sessions were missed through unauthorised absences by children living in Bracknell Forest. School absence data is not available for Bullbrook.

Key Stage 2 attainment

- 65.4% of children living in Bracknell Forest achieved the expected level of attainment in Key Stage 2. 73.3% of children living in Bullbrook achieved the expected level of attainment in Key Stage 2.

GCSE attainment

- 57.5% of children living in Bracknell Forest achieved 5 GCSEs at grades A* to C which included English and Maths. 53.3% of children living in Bullbrook achieved 5 GCSEs at grades A* to C which included English and Maths.

Schools

- There are three schools located in Bullbrook: Holly Spring Junior School, Holly Spring Infant and Nursery School and St Joseph's Catholic Primary School.

Foundation Stage

- 70.7% of children living in Bracknell Forest achieved at least the expected level across all Early Learning Goals. Foundation stage data is not available for Bullbrook.

6. HEALTH

It is often difficult to use health data when looking at small areas such as Wards. This is because of the size of the numbers involved. For example, only a few people from each Ward may be admitted to hospital each year for a specific condition. When we are looking at numbers that are very small we have to consider two key points before they are used in profiles such as this. Firstly, when numbers are small we are not legally able to share them as the individual may be identifiable from the data. Secondly, it is difficult to come to any reliable conclusions from information which is based on these small numbers. It may also be the case that the information is not available at these low levels. This is particularly true of information about peoples lifestyles (for example, how many people smoke or drink alcohol). One of the ways to overcome this is to use 'modelled' data. This is data that has been taken from a much larger number of people and used to estimate the likelihood of a certain characteristic appearing in other areas, such as Wards, depending on some key features of that area such as how many people of a particular age group live there.

Health data 2011-16

- The percentage of live births to mothers living in Bullbrook which were of a low birth weight is estimated to be 1.9%. The percentage, on average, across Bracknell Forest is 1.95%. Any difference is not statistically significant.
- The number of people living in Bullbrook who are diagnosed with cancer is as expected given the age and gender structure of the population.
- The average life expectancy at birth for males living in Bullbrook is 80.2 years. The average life expectancy at birth for females in Bullbrook is 83.6 years.

Deaths

Deaths from all causes, all ages	as expected*
Deaths from all causes, under 65	as expected
Deaths from all causes, under 75	as expected
Deaths from all cancer, all ages	as expected
Deaths from all cancer, under 75	as expected
Deaths from circulatory disease, all ages	as expected
Deaths from respiratory diseases, all ages	as expected

* Given the age and gender structure of the population and national death rate

Hospital admissions

Emergency hospital admissions for all causes	lower than expected*
Planned hospital admissions for all causes	lower than expected
Emergency hospital admissions for all coronary heart disease	as expected
Emergency hospital admissions for stroke	as expected
Emergency hospital admissions for heart attack	as expected
Emergency hospital admissions for chronic obstructive pulmonary disease	as expected

* Given the age and gender structure of the population and national admission rates

Top 5 causes of deaths

Bullbrook

Cause of death - 2015	Number
Cancer (malignant neoplasms)	40
Ischaemic heart diseases	18
Cerebrovascular diseases	13
Chronic lower respiratory diseases	13
Influenza and pneumonia	11

* Figures under 5 have been suppressed

6. HEALTH

Childhood Obesity

- The heights and weights of children in reception year and year 6 are measured annually as part of the National Child Measurement Programme.
- 10.5% of reception year children in Bullbrook are obese. An average of 7.3% of reception year children in Bracknell Forest are obese.
- 17.4% of year six children in Bullbrook are obese. An average of 15.7% of year six children in Bracknell Forest are obese.
- It is important to note that this data at Ward level involves small numbers and any differences between areas will be, in part, due to chance occurrences in the data.

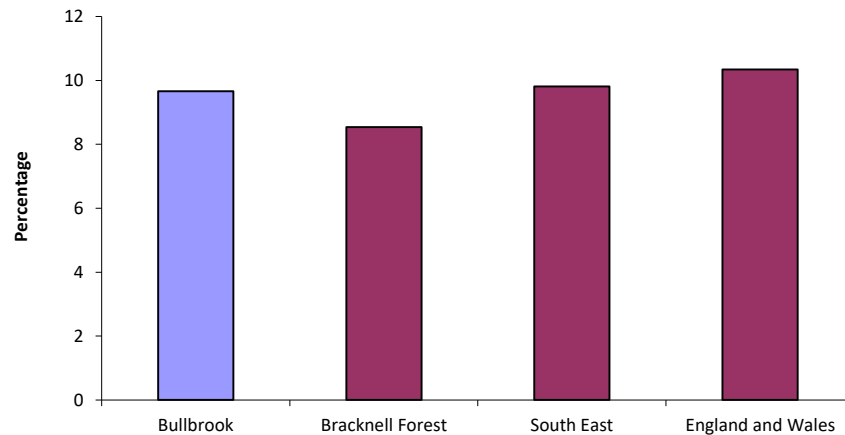
Adult Lifestyles

- An estimated 23.3% of adults in Bullbrook are obese.
- An estimated 18.6% of adults in Bullbrook binge drink.
- An estimated 27% of adults in Bullbrook eat healthily.

Sense of health and wellbeing

- According to the 2011 Census 83.6% of adults in Bullbrook feel that they are in either good or very good health.
- 6.9% of adults in Bullbrook feel that their lives are limited a lot due to ill health or disability and 8.2% of adults in Bullbrook feel that their lives are limited a little due to ill health or disability.

People providing at least one hour of unpaid care per week



6. HEALTH

Falls are the largest cause of emergency hospital admissions for older people, and significantly impact on long term outcomes, e.g. being a major precipitant of people moving from their own home to long-term nursing or residential care. The tables below show falls related admissions broken down by local authority and electoral ward.

Falls admissions by age

Age Band	2011-12	2012-13	2013-14	2014-15	2015-16
Under 20s	94	89	95	108	20
20-64	131	122	110	115	26
65-79	130	117	106	121	27
80+	312	243	232	250	76
Total	667	571	543	594	149

Falls admissions by fiscal month

Month	2011-12	2012-13	2013-14	2014-15	2015-16
Jan	66	46	32	44	48
Feb	64	57	42	46	44
Mar	47	41	44	47	57
Apr	53	54	49	56	
May	64	45	39	33	
Jun	58	53	49	51	
Jul	58	48	43	49	
Aug	43	51	57	58	
Sep	61	44	46	66	
Oct	51	48	55	57	
Nov	55	46	36	42	
Dec	47	38	51	45	
Total	667	571	543	594	149

Yearly Practice Falls Admissions by ward

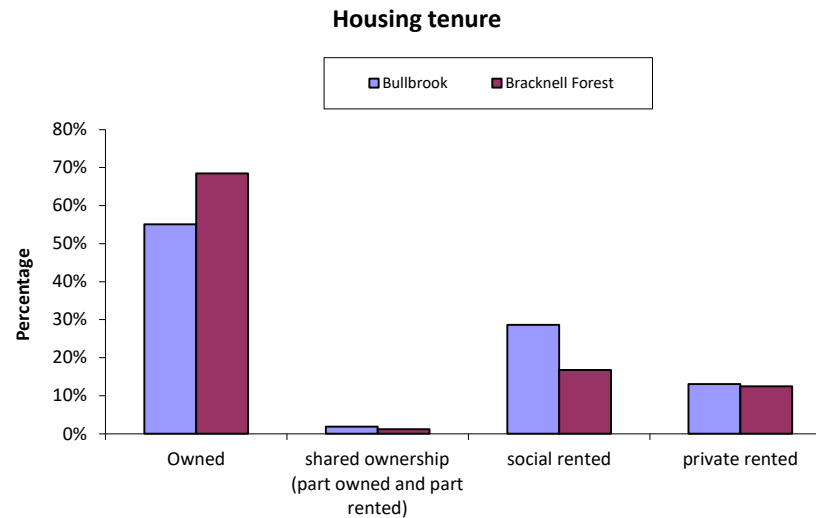
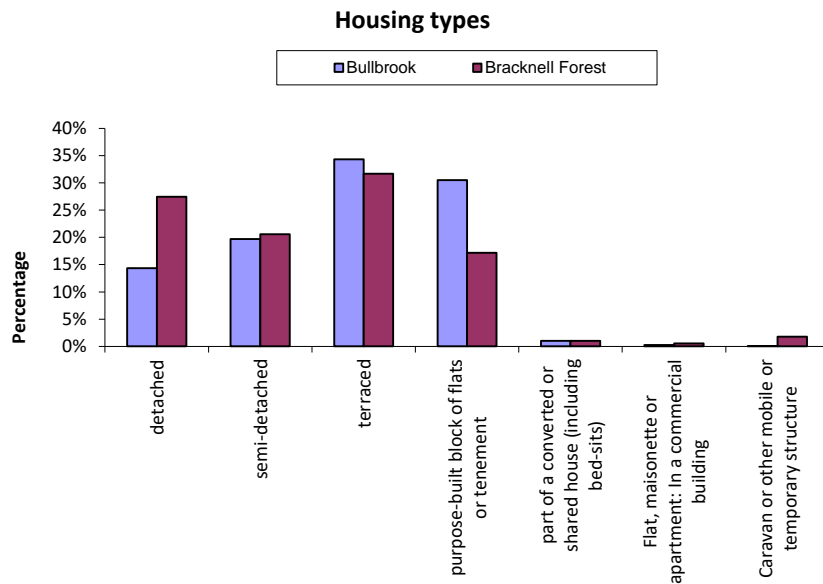
Ward Name	2011-12	2012-13	2013-14	2014-15
Bullbrook	68	37	47	45

- The highest risk of falls is in those aged 65 and above and it is estimated that about 30% people (2.5 million) aged 65 and above living at home and about 50% of people aged 80 and above living at home or in residential care will experience an episode of fall at least once a year.
- Falls that results in injury can be very serious - approximately 1 in 20 older people living in the community experience a fracture or need hospitalisation after a fall. Falls and fractures in those aged 65 and above account for over 4 million bed days per year in England alone, at an estimated cost of £2 billion.

7. HOUSING

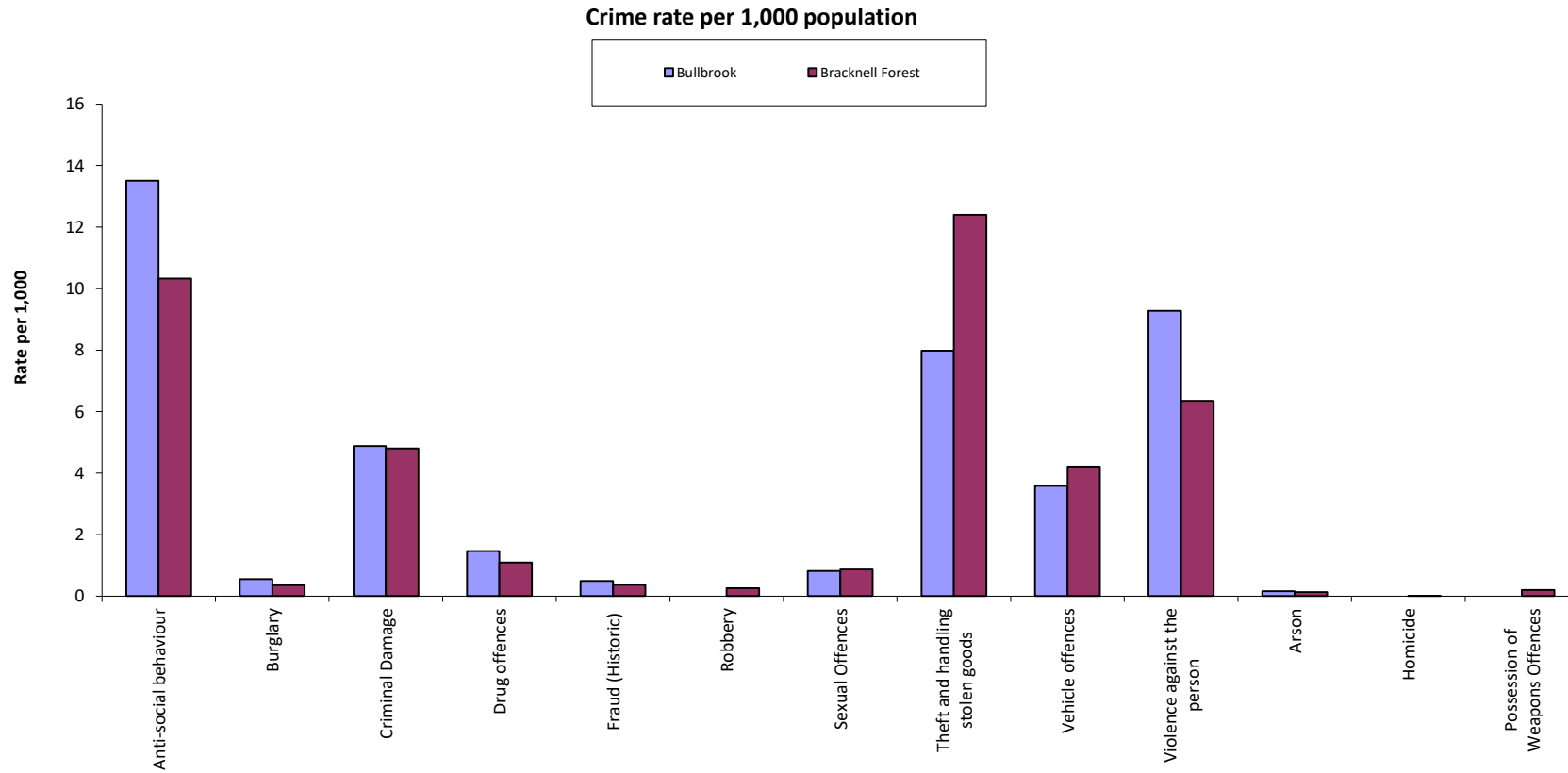
- The most common council tax band in which housing in Bracknell Forest falls is Band C. This accounts for 37.5% of all dwellings. Data is not available of council tax banding for Bullbrook Ward.
- There are a total of 2573 dwellings in Bullbrook. 0.08% of these are shared dwellings. This is greater than the average number of shared dwellings across Bracknell Forest.
- The most common housing type in Bullbrook is terraced. This accounts for 34.4% of all housing.

- The average household size in Bullbrook is 2.3 people, which is smaller than the average for Bracknell Forest.
- The average number of rooms in houses in Bullbrook is 5.3. This is fewer than the average for Bracknell Forest.
- The average number of bedrooms in houses in Bullbrook is 2.7, which is fewer than the average for Bracknell Forest.
- 4.43% of housing in Bullbrook is classified as needing one or more bedrooms more than it has in order to be adequately sized for the number of people living there. This is more households than the Bracknell Forest average.
- 0.99% of houses in Bullbrook do not have central heating. This is fewer than the average for Bracknell Forest.



8. COMMUNITY SAFETY

- There were 218 crimes recorded in Bullbrook during 2013/14. This equates to 35.5 crimes per 1,000 people living in Bullbrook - a rate that is higher than the average across Bracknell Forest.
- The most commonly occurring crime was classified as ASB for which there were 13.51 crimes per 1,000 people living in Bullbrook.



9. ENVIRONMENT

Area

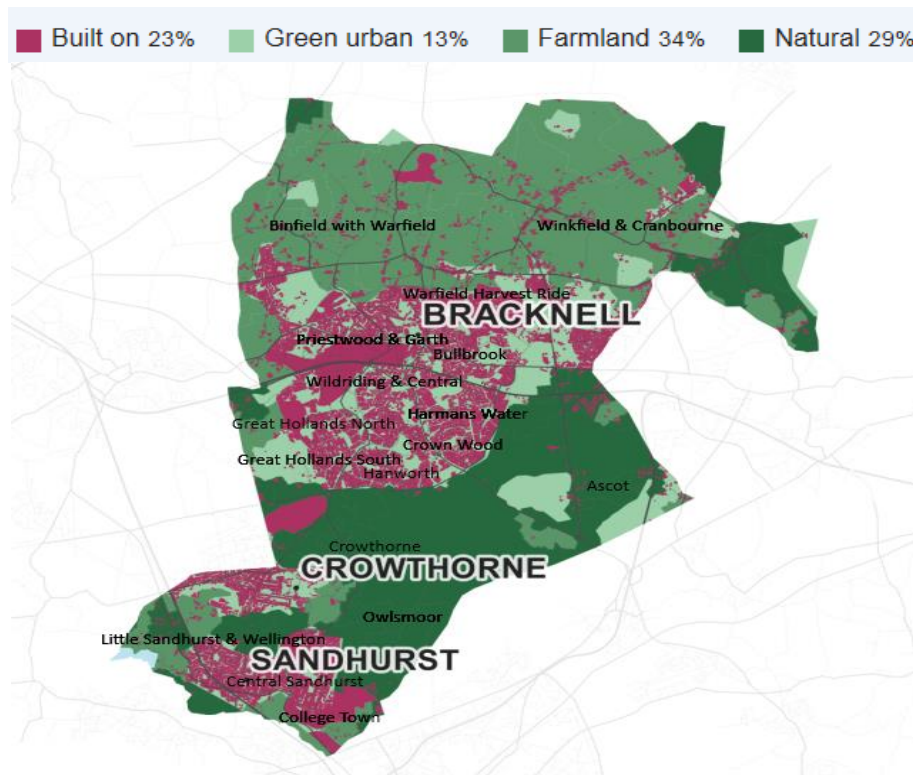
- In Bullbrook, according to the Urban/rural classification from ONS in 2012, 100% of the population live in areas classified as urban city and town.
- Bullbrook has an area of 1 square kilometers which represents 1.53% of the total area of Bracknell Forest.

Population Density

- Population density describes the average number of people living in each square kilometre of land in an area.
- An average of 7104 people live in each square kilometre of Bullbrook. This is more than the average living in each square kilometre of Bracknell Forest (1,225 people per sq km).

Land Use

- The most common land use in Bracknell Forest is Farmland (fields, orchards etc.), followed by Natural land (moors, heathland, natural grassland etc.), then Built on (roads, buildings etc.) and Green Urban (parks, gardens, golf courses, sports pitches etc.).



10. SOURCES OF DATA

Item	Source	Date	Description
1. Summary Indicators			
Indices of Multiple Deprivation - IMD (2015)	Department for Communities and Local Government (DCLG)	2015	A national index of deprivation, where 32,480 Lower Super Output Areas are ranked in order of relative deprivation
% children in Poverty (2015)	Department for Work and Pensions (DWP)	2016	Measures the % of children in households receiving Child Tax Credits and with incomes 60% or less of the median
Barriers to Housing and Services - IMD domain (2015)	DCLG	2015	A national index of deprivation, where 32,480 Lower Super Output Areas are ranked in order of relative deprivation
% JSA Claimants (September 2017)	NOMIS	2017	DWP benefits data published by NOMIS
Post-16 Qualifications - % Level 3 or higher (2011)	2011 Census	2011	% of working age population with level 3 or higher
% key Stage 2 Level 4+ (2012)	Department for Education, ONS	2011/12	% of pupils achieving Level 4 or higher in both English and Maths
% 5+ GCSEs A*-C (inc Maths and English) (2016)	DFE/Berkshire Local Authorities	2016	% of pupils achieving 5 or more GCSEs at grade A*-C including English and Maths
All Cause Mortality <75 (2012-16)	Public Health England	2016	Age/sex standardised mortality rates
Life Expectancy - males (2011-15)	Public Health England	2017	Life expectancy at birth calculated from all cause, all age mortality
Life Expectancy - females (2011-15)	Public Health England	2017	Life expectancy at birth calculated from all cause, all age mortality
Emergency hospital admissions for all causes (2011/12-2015/16)	Public Health England	2017	Age/sex standardised hospital admission rates
% low Birthweights <2500g (2011-15)	Public Health England	2017	Percentage of live births with weight <2,500g
% occupancy rating - bedrooms -1 or less (2011)	Public Health England	2011	A measure of under-occupancy and over-crowding. A value of -1 implies that there is one room too few and that there is overcrowding in the household.
% no Central Heating (2011)	2011 Census	2011	The percentage of housing which does not have central heating
% socially Rented (2011)	2011 Census	2011	The percentage of households that socially rent
Crime rate per 1,000 (2013/14)	2011 Census	2014	Total crime rate per 1,000 population
Anti-social Behaviour rate per 1,000 (2013/14)	Thames Valley Police	2014	Total ASB rate per 1,000 population
Theft and handling stolen goods rate per 1,000 (2013/14)	Thames Valley Police	2014	Total Theft and Handling of Stolen Goods rate per 1,000 population
Violence with/without injury (2013/14)	Thames Valley Police	2014	Total violence with/without injury rate per 1,000 population
2. Demographics			
Population size	Office for National Statistics (ONS)	2017	Mid-2016 Population Estimates for 2015 Wards in England and Wales
Ethnicity	ONS	2011	Ethnic group of usual resident population on Census day 2011. BME is defined by ONS as including White Irish, White other (including White asylum seekers and refugees and Gypsies and Travellers), mixed (White & Black Caribbean, White & Black African, White & Asian, any other mixed background), Asian or Asian British (Indian, Pakistani, Bangladeshi, any other Asian background), Black or Black British (Caribbean, African or any other Black background), Chinese, and any other ethnic group.
Religion	ONS	2011	Religion or belief of usual resident population on Census day 2011

Item	Source	Date	Description
Household composition	ONS	2011	Members of each household on Census day 2011
Migration	ONS	2011	Usual residents who were not born in the UK recorded on Census day 2011
Fertility Rate (2011-2015)	PHE/ONS	2017	Crude fertility rate: live births per 1,000 women aged 15-44 years, 2011-2015
Live Births (2015)	NHS Digital	2016	The annual extract of births data for 2015.
3. Deprivation			
Indices of Multiple Deprivation	DCLG	2015	A national index of deprivation, where 32,480 Lower Super Output Areas are ranked in order of relative deprivation. The Indices of Deprivation 2010 is not a measure of affluence; all of the indicators used in the index are designed to identify aspects of deprivation, not affluence. Therefore the area ranked as the least deprived is not necessarily the most affluent. Follow link for more information: https://www.gov.uk/government/uploads/system/uploads/attachment_data/file/6320/1870718.pdf
Child Poverty (2015)	DWP	2016	Measures the % of children in households receiving Child Tax Credits and with incomes 60% or less of the median
Pupils eligible for free school meals	Department for Education (DFE) and Berkshire Local Authorities	2011/12	% of pupils eligible for free school meals
Car Ownership/Public Transport	ONS	2011	Car ownership per household as recorded on Census day 2011
Method of travel to work	ONS	2011	Method of travel to work (those in employment) as recorded on Census day 2011
4. Economy and enterprise			
Benefits claimants	DWP/NOMIS	2017	DWP benefits data published by NOMIS
Employment status	ONS	November 2011	Employment status as recorded on Census day 2011
Qualifications	ONS	2011	Highest level of qualification as recorded on Census day 2011
5. Education			
All education indicators	DFE/Berkshire Local Authorities	2012	The educational data provides 2012 year-end information on pupil residency-based small area pupil attainment. Pupils who reside and attend schools within the Local Authority
6. Health			
Low birth weight babies (2011-15)	Public Health England	2017	Percentage of live births with weight <2,500g
Cancer incidence (2011-15)	Public Health England	2017	Cancer incidence rates - age/sex standardised
Life expectancy (2011-15)	Public Health England	2017	Life expectancy at birth calculated from all cause, all age mortality
Mortality (2012-16)	Public Health England	2017	Age/sex standardised mortality rates
Hospital admissions	Public Health England	2011-16	Age/sex standardised hospital admission rates
Childhood obesity	Public Health England	2013-16	Children classified as having a body mass index of 30 or more recorded during the National Child Measurement Programme (NCMP)
Lifestyle behaviours	Public Health England	2006-2008	Self-reported lifestyle behaviours as measured in the Health Survey for England
Sense of health and wellbeing	ONS	2011	Persons self-reported wellbeing on Census day 2011
Providing unpaid care	ONS	2011	Persons reporting themselves as providing unpaid care at least one hour per week on Census day 2011
Falls data	Berkshire West Better Care Fund Dashboard	2016	Falls data

Item	Source	Date	Description
7. Housing			
Council tax bands	Neighbourhood Statistics	2011	Council tax bands of dwelling stock
Number of dwellings	ONS	2011	Number of dwellings recorded on Census day 2011
Shared dwellings	ONS	2011	Dwellings containing members belonging to two or more different families
Household size	ONS	2011	The average number of people resident in a household
Room numbers	ONS	2011	The average number of rooms in a household
Household size	ONS	2011	The average number of people resident in a household
Central heating	ONS	2011	The percentage of housing which does not have central heating
8. Community Safety			
Crime rates	Thames Valley Police	2013/14	Number of recorded crimes per 1,000 population
9. Environment			
Urban/rural classification	ONS	2012	ONS urban/rural classification (lower super output area). A super output area is a geographical area designed for the collection and publication of small area statistics. There are two layers: smaller Lower SOAs and larger middle SOAs.
Population density	ONS	2016	Persons per square kilometre
Land Use	Corine Land Cover inventory/BBC	2016	Land use by local authority

Acknowledgments

Sheffield City Council Ward Profiles - David Leather - <https://www.sheffield.gov.uk/your-city-council/sheffield-profile/ward-profiles.html>

Ward Maps - © OpenStreetMap Contributors - reports.esd.org.uk

Ward Pictures - <http://www.geograph.org.uk>

Picture 1 © Copyright Peter Taylor and licensed for reuse under this Creative Commons Licence.

Picture 2 © Copyright Nigel Cox and licensed for reuse under this Creative Commons Licence.

Picture 3 © Copyright Don Cload and licensed for reuse under this Creative Commons Licence.